



Tom Fitzgerald, detail, *Death by Numbers*, 2005
Bronze, marble, wood, 106 x 30 x 34cm
Collection of University of Limerick, UL

***Spirit Music*, Tom Fitzgerald**

A Celebration of a Life's Work

3rd March – 8th May 2022

Spirit Music, the title of Tom Fitzgerald's exhibition at LCGA is an invitation to look at his work in different ways: quiet/resonant; internal/external; corporeal/ethereal all of which are embodied in this exhibition, *Spirit Music*, a celebration of Fitzgerald's long career and contribution to the visual arts locally and nationally. Although Fitzgerald's work has been exhibited internationally, his life, education and practice has been in Limerick city and county. His quiet confidence in a unique personal language and his ease in his own place has been a constant source of inspiration.

This exhibition includes works from the early 1980s right up to the present. Fitzgerald's early work is predominantly sculptural using limestone and other materials including slate, wood and glass. These works frequently engage with the myths and legends of the past to more personal works such as his father's tools (on loan from Limerick City and County Council).

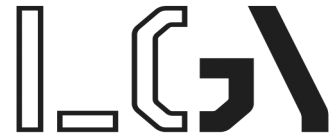
Carnegie Building, Pery Square, Limerick, Ireland.

FREE ADMISSION

Tel: +353(0)61 310633; F: +353(0)61 310228; Email: artgallery@limerick.ie; Web www.gallery.limerick.ie

Opening Hours: Monday - Saturday 10-5pm; Sunday 12-5pm

LAST ENTRY 15 minutes before closing *Closed on Public & Bank Holidays.*



Included also are drawings from his exhibition, *The Ministry of Dust (2004)* and *The Celtic Zoo (2014)* include works in pencil, watercolour and beeswax. The almost dream-like quality of the images, combined with the humour of the titles don't tone down the caustic perspective taken by Fitzgerald on greed and corruption and their impacts on the environment. In this exhibition, the assemblage series reflect his adaptability and range while his recent foray into painting results in a body of work where the bold and vibrant palette demonstrates Fitzgerald's constant interrogation of his practice.

Spirit Music is a celebration of this artist's body of work over forty years and provides us with an opportunity to see the development of his work over this period. It also takes us on a journey at times mythical and whimsical and others caustic and satirical ensuring that the "past is not a foreign country".

The catalogue to accompany this exhibition to be published in mid-April 2022 contains essays by Sean Ó Laoire, Gerry Dukes and Niamh Nic Ghabhann who all present a close pen-portrait of this "pure artist" and his significant and ongoing contribution to the visual arts in the Mid-West and Ireland. We are proud to host this exhibition at LCGA and to call Tom Fitzgerald "one of our own".

*The Celtic Zoo publication with Theo Dorgan by Occasional Press 2014 accompanies the Celtic Zoon drawings is a limited edition publication available to purchase any queries please ask the gallery staff or email artgallery@limerick.ie

Artist's website: <https://tomfitzgerald.ie>

social media links:

twitter: @limerickgallery

facebook: @limerickcitygalleryofart

instagram: @limerickcitygallery

Sale enquiries please ask gallery staff for price list

Queries to artgallery@limerick.ie

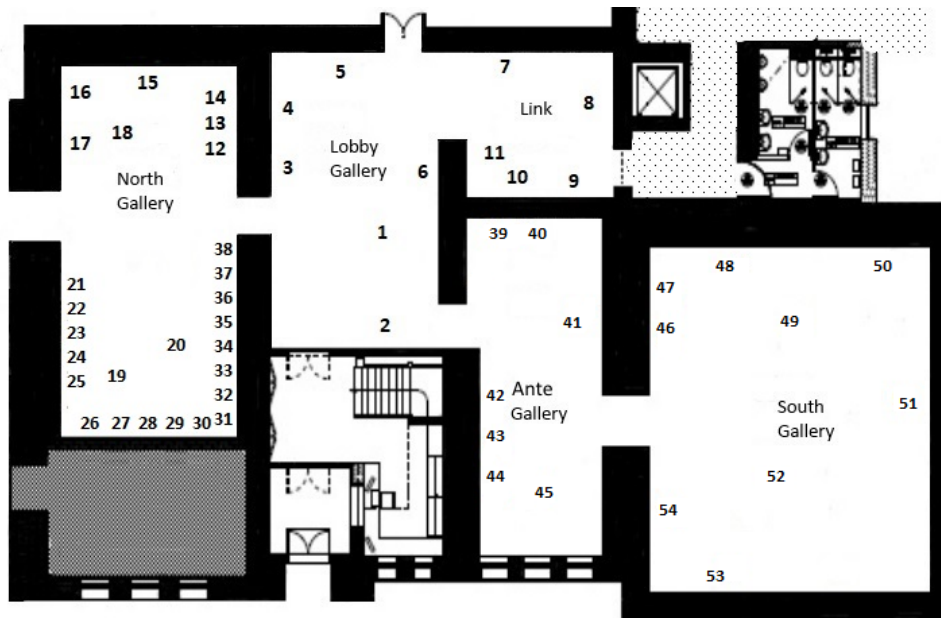
Carnegie Building, Pery Square, Limerick, Ireland.

FREE ADMISSION

Tel: +353(0)61 310633; F:+353(0)61 310228; Email: artgallery@limerick.ie; Web www.gallery.limerick.ie

Opening Hours: Monday - Saturday 10-5pm; Sunday 12-5pm

LAST ENTRY 15 minutes before closing **Closed on Public & Bank Holidays.**



Work No.	Title	Medium	Dimensions
1	A Portable Pyramid, 2006	stainless steel, glass vessels, soot, plaster bandage, paint, plastic tubing, wool, plastic wheels	259 x 200 x 188cm
2	Lung bypass Device (for Adam & Eve), 2005	stainless steel, brass, rubber, wool, plastic tube, hardware	110 x 37 x 21cm
3	Odd-Lot Theory, 2019	wood, ceramic tile fragments, silver leaf, paint	43 x 19 x 15cm
4	Lucretius Series, Cushion Theory, 2017	wood, stamped text, paint	30 x 31 x 8cm
5	Quantumania (100 Tiles), 2021	engraved ceramic tiles (100)	150 x 150cm
6	Lucretius Series, Assymetric shock, 2017	wood, paint, engraved ceramic tile, mosaic tiles, glue	21.5 x 21 x 7cm
7	Dom-Duit, 1995	slate & limestone X 14	variable dimensions
8	My Fathers Saw, (lectern) from Ephemeral Lexion, 1995	slate & limestone	101 x 44 x 31cm
9	Vessel for the Alchemist, 2004	bronze, stainless steel, gilded lead, hardware	68 x 68 x 12cm
10	Bee-body, 1992	limestone, cast iron, hardware	40 x 36 x 10cm
11	Lost World, 1997	bronze	43 x 30 x 25cm
12	Cathleen Ní Houlihan is Troubled By Water Borne Parasites in the Garden of Earthly Delights, 2015	slate	34.5cm diameter
13	Cathleen Ní Houlihan is Harassed By Old Irish Saint, 2006	slate	27cm diameter
14	Bankers Seduces Cathleen Ní Houlihan And leaves her Holding the baby, 2014	slate	27cm diameter
15	Haiku Drawings, 2018 Series x 30	mixed media on paper	29.5 x 29.5cm, each X 30
16	Bashos Haiku, 2013	bronze	32.5 diameter
17	Altamira Haiku, 2013	bronze	32.5 diameter

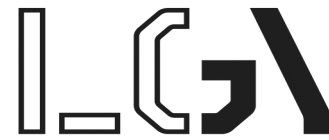
Carnegie Building, Pery Square, Limerick, Ireland.

FREE ADMISSION

Tel: +353(0)61 310633; F:+353(0)61 310228; Email: artgallery@limerick.ie; Web www.gallery.limerick.ie

Opening Hours: Monday - Saturday 10-5pm; Sunday 12-5pm

LAST ENTRY 15 minutes before closing Closed on Public & Bank Holidays.



18	Death by Numbers, 2005	bronze, marble, hardware	106 x 30 x 34cm
19	Cloud Haiku, 2013	glass, alabaster, wood, silver leaf, hardware,	43 x 22 x 22cm
20	Bee Haiku, 2016	engraved glass, slate	32 x 24.5 x 24.5cm
21	Veil, 2017	acrylic on canvas	44 x 44cm
22	Friends, 2021	acrylic on canvas	44 x 44cm
23	La Vie, 2017	acrylic on canvas	44 x 44cm
24	Clown Laughs While Home Burns, 2021	acrylic on canvas	44 x 44cm
25	The Weeping Amoeba, 2020	acrylic on canvas	44 x 44cm
26	The Inspector of Dreams, 2022	acrylic on canvas	44 x 44cm
27	A Hare, 2021	acrylic on canvas	44 x 44cm
28	Mother and child, 2020	acrylic on canvas	44 x 44cm
29	Elysium, 2021	acrylic on canvas	44 x 44cm
30	Man saving whale, 2021	acrylic on canvas	44 x 44cm
31	Lucretius Series, A Nul hypothesis, 2018	found plastic, steel spring, hardware	22 x 20 x 7cm
32	Lucretius Series, Blind pool, 2017	wood, ceramic panel, slate, acrylic paint, gesso	25 x 38 x 9cm
33	Lucretius Series, Current assets, 2017	wood, stainless steel, plastic fragments, wood dye	34 x 34 x 3cm
34	Lucretius Series, Around us, 2017	slate, wood, stainless steel,	17.5 x 38 x 5 x 3cm
35	Lucretius Series, Offshore, 2017	slate, dyed wool, copper	22 x 35 x 11cm
36	Lucretius Series, Out there, 2017	wood, plastic, rusty iron, silver leaf, newsprint	8.5 x 9 x 14cm
37	Lucretius Series, Horizontal merger, 2017	wood, brass, slate, marble, rivets	32 x 39 x 4cm
38	Lucretius Series, Wallflower, 2018	wood, acrylic paint	31 x 49 x 8cm
39	Tobacco-Industry supplies Adam & Eve with Lung Bypass Technology, 2005	mixed media on paper	78 x 94.5cm
40	Flying, 2015 (Songs of the Dust Series)	mixed media on paper	80 x 80cm
41	The Politics of being, 1994	wood, stone, engraved glass, lead, beeswax	123 x 52 x 146cm
42	The Ministry of Oil and The Ministry of Dust, 2003	mixed media on paper	37 x 29cm
43	Floor Plan of Heaven With Emergency Escape Module, 2003	mixed media on paper	34 x 26cm
44	Celtic Tiger Expires having....., 2003	mixed media on paper	37 x 29cm
45	The Ministry of Dust, 2004	mixed media elements	variable
46	The cable car, 2015 (Songs of the Dust Series)	mixed media on paper	79.5 x 80cm
47	The Clown, 2015 (Songs of the Dust Series)	mixed media on paper	79.5 x 80cm
48	Implement No. 6, 1984	limestone, leather, steel	120 x 40 x 10cm (approx)
49	Sweeneys Harp, 1989	wood, steel, stone, hardware	274 x 104 x 12.7cm
50	The Celtic Zoo Book, poems by Theo Dorgan	limited edition book with illustrations from The Celtic Zoo drawings with limited edition print or without print	30 x 40 x 2cm
51	The Celtic Zoo, 2010 Series X 24 drawings	mixed media on paper	30 x 42cm, each X 24
52	Boat used in voyage from A to B, 2004	plaster of paris, stainless steel, wood, wheels, hardware	157 x 50 x 200cm
53	Sweeneys Head, 1989	limestone, leather, steel	20 x 20 x 15cm
54	Salamander, 2015 (Songs of the Dust Series)	mixed media on paper	96 x 94.5cm

Carnegie Building, Pery Square, Limerick, Ireland.

FREE ADMISSION

Tel: +353(0)61 310633; F:+353(0)61 310228; Email: artgallery@limerick.ie; Web www.gallery.limerick.ie

Opening Hours: Monday - Saturday 10-5pm; Sunday 12-5pm

LAST ENTRY 15 minutes before closing Closed on Public & Bank Holidays.