



PRESS RELEASE

Charles Harper, Retrospective at LCGA 29 November 2019 – 26 January 2020

LCGA is delighted to present Charles Harper: A Retrospective this exhibition is reimagined from the RHA exhibition in 2018

Charles Harper is one of Limerick's adopted sons as a revered lecturer and Head of Painting at Limerick School of Art and Design for many years and as one of our better-known artists. Harper's ambition for his art ran parallel to the establishment of an exciting reputation for painting in LSAD and indeed as one of the founding members of EVA – Ireland's only biennial event. This retrospective exhibition provides us with an opportunity to catch a glimpse of the development of Harper's work over almost 6 decades.

Why a retrospective?

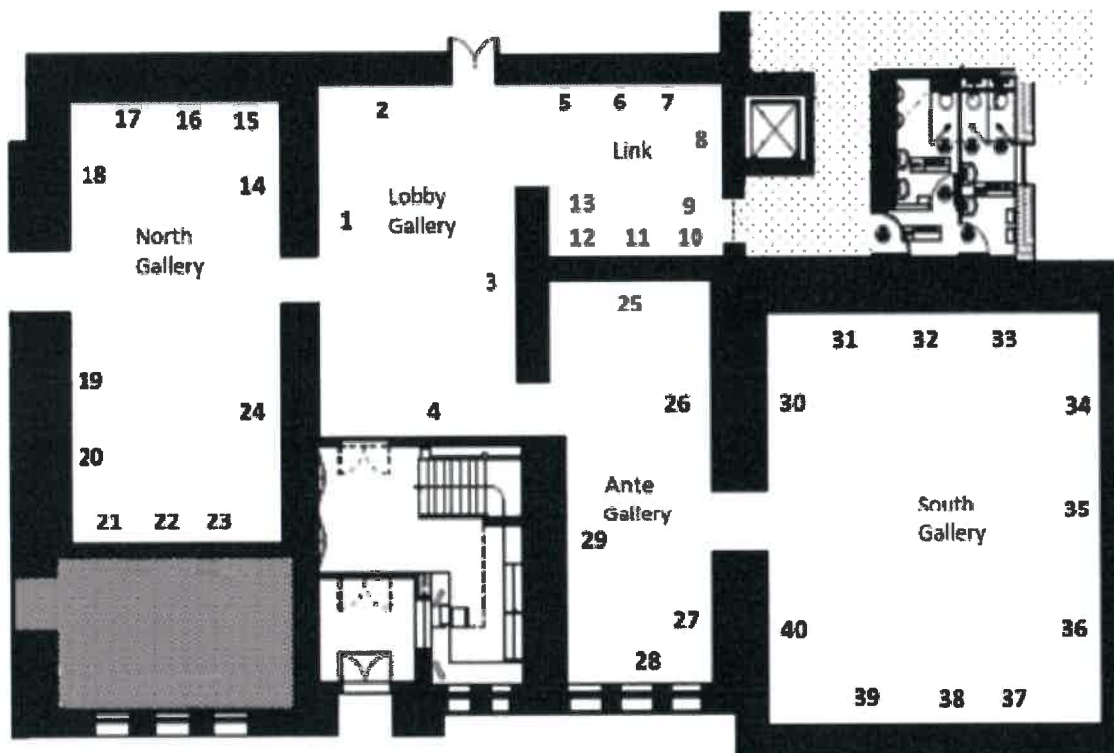
'The advantage of a retrospective is the opportunity to review works produced through periods of experimentation, before the artist has developed their distinctive methods of working, and that often comprise little known examples, many of which may have been retained by the artist and rarely seen in public; gems whose value becomes particularly evident in retrospect. It is an opportunity also to see how ideas may develop from their earliest manifestations, to reach a fuller realization or give way to competing interest.' (Excerpt from catalogue essay by Dr. Yvonne Scott).

Harper's signature style is associated with the grid, a style he adopted in the 70s, when American artists working within the rigour of Minimalism and Serial art were also deploying it. However, Harper's adaptation was less functional and more metaphorical with societal restrictions at its core. In an early work from the 60s we are offered a glimpse into how political his sensibility was at that stage. The figure and the geometric permeate his works throughout the decades with landscape entering his oeuvre only in the past two decades.

The exhibition will feature works from the mid 60's to the present throughout the ground floor galleries at LCGA. A fully illustrated catalogue accompanies the exhibition with texts by Patrick Murphy, Director of the RHA, and Dr. Yvonne Scott and Aidan Dunne.

LCGA is indebted to Patrick Murphy, Director of RHA who curated this exhibition

For further information or queries please contact Siobhan.oreilly@limerick.ie



	Title	Date	Medium	Dimensions	Credit line
1	Headforms	c.1970s	acrylic on card	42.5 X 53 cm	Private Collection Collection of the Arts Council/An Chomhairle Ealaíon
2	Living Units (Visit B)	1982	acrylic on canvas	152 x 152 cm	
3	City	2006	Acrylic on canvas	153 x 183.5 cm	Courtesy of the Artist
4	Angel	2009	acrylic on linen	59 x 67 cm	Courtesy of the Artist
5	Transcience I with figures	c.1975	mixed media , watercolour, ink on paper	52 x 70 cm	Private Collection
6	Recalled Journey	c.1975	watercolour on paper	45 x 70 cm	Private Collection
7	Conflict	1970s	acrylic on paper	50 x 62 cm	Private Collection
8	Goll Mac Morna	c.1960s	oil on cotton	5ft x 3.5ft	Permanent Collection of Limerick City Gallery of Art
9	Fellow students and lecturers at NCAD	1975	linoprint on japanese paper	47 x 51 cm	Private Collection
10	Inferno	1965	etching (ed. 5/50)	33 x 37 cm	Courtesy of the Artist
11	Orange Drum	1970	acrylic on paper	50 x 63 cm	Private Collection
12	Abstract	1962	oil on canvas	72.5 x 146 cm	Courtesy of the Artist
13	Untitled	1968	mixed media	56 x 42 cms	Private Collection
14	Meeting II	1987	watercolour on tissue	65 x 94.5 cm	Private Collection
15	Puppet	1978	watercolour/Japanese paper	62 x 94 cm	Permanent Collection of Limerick City Gallery of Art
16	Entwined	1979	indian ink, watercolour on japanese paper	64 x 85cm	Private Collection
17	Untitled	1985	watercolour on japanese paper	61 x 71cm	Private Collection
18	Streets Forms,	1993	mixed media on paper	32.5 x 47.5cm	LCGA Permanent Collection
19	Randomized Heads	2017	acrylic on canvas	61 x 61	Courtesy of the Artist
20	Confined Citizens	2009	Acrylic on canvas	80 X 80 cm	Courtesy of the Artist
21	Throng		watercolour on paper	64 x 87cm	Private Collection
22	Citizens II	1979	acrylic on canvas	60 x 79 cm	Private Collection
23	Citizens	1978	ink and watercolour on japanese paper	63 x 93 cm	Permanent Collection of Limerick City Gallery of Art
24	Class of 62	2008	acrylic on linen	120 x100 cm	Courtesy of the Artist
25	Audience	2014	acrylic on canvas	122 x 122cm	Courtesy of the Artist
26	Last Race	2006	Acrylic on canvas	153 x 147 cm	Private Collection
27	Self-Portrait	2003	Acrylic on canvas	178.5 x 58 cm	Courtesy of the Artist

28	<i>Execution</i>	1966/2016	Acrylic on canvas	180 X 180	Courtesy of the Artist
29	<i>Glamour</i>	2018	acrylic on linen	90 x 80	Courtesy of the Artist
30	<i>Landscape</i>	1994	Acrylic on Canvas	91 X 91	AIB Art Collection
31	<i>Landscape 3</i>	2014	Acrylic on linen	100 X 100	Courtesy of the Artist
32	<i>Forgotten Landscape</i>	2016	Acrylic on canvas	60 X 80	Courtesy of the Artist
33	<i>Mountain</i>	2013	Acrylic on canvas	100 X 100	Courtesy of the Artist
34	<i>Bellisima</i>	1981	acrylic on canvas	184 x 154 cm	Private Collection
35	<i>Rephra 2,</i>		Acrylic on linen	169 x 169cm	Private Collection
36	<i>Ancient Roots</i>	1989-2005	Acrylic on canvas	152.5 x 152.5 cm	Courtesy of the Artist
37	<i>Treescape</i>	2014	Acrylic on canvas	100 X 100	Courtesy of the Artist
38	<i>Evening Landscape</i>	2016	Acrylic on canvas	70 X 70	Courtesy of the Artist
39	<i>Burren 1</i>	2015	Acrylic on canvas	120 X 120	Courtesy of the Artist
40	<i>That Evening</i>	2010	Acrylic on canvas	80 X 100 cm	Courtesy of the Artist